

# DOPPELHAUS HAUS A

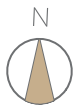
4,5 ZIMMER // MODERNER GRUNDRISS MIT HOBBYRAUM

ERDGESCHOSS

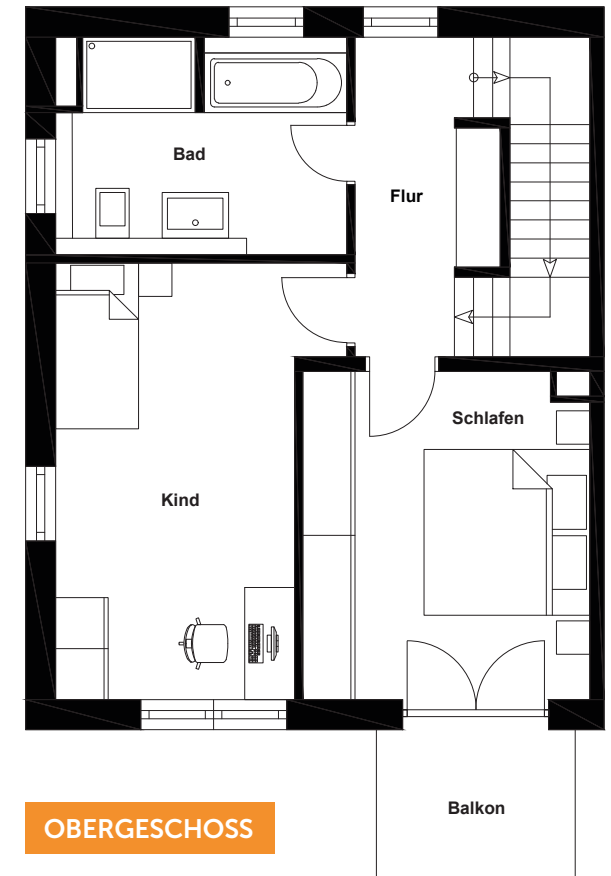
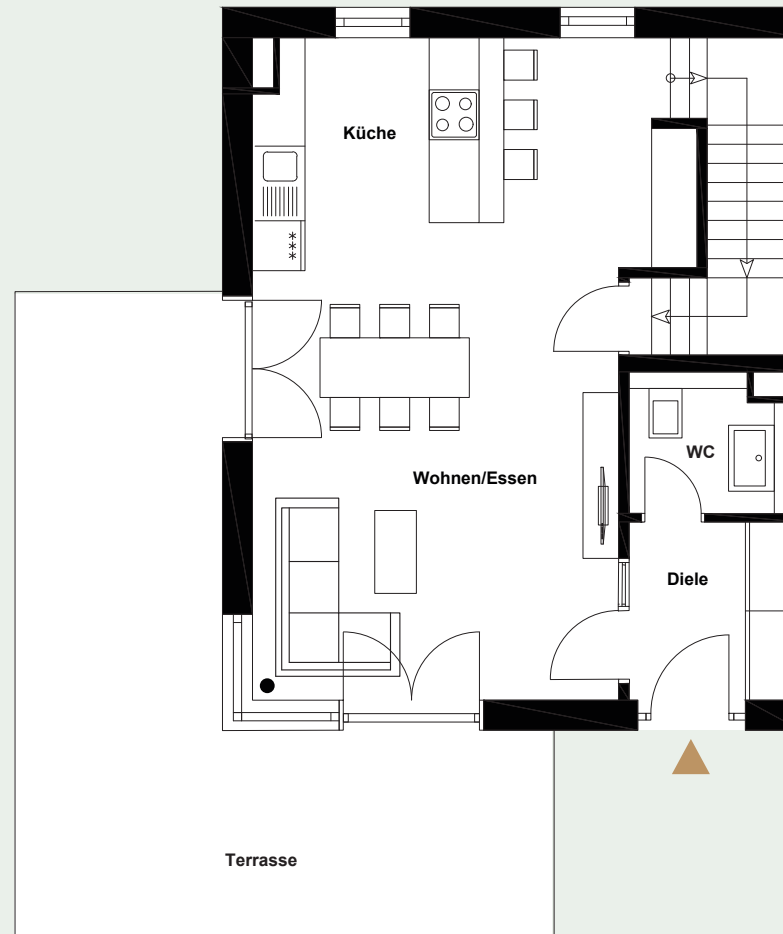
	<b>EG</b>
Wohnen/Essen/Küche	38,26 m <sup>2</sup>
Diele	8,28 m <sup>2</sup>
WC	3,19 m <sup>2</sup>
Terrasse 1/2	13,99 m <sup>2</sup>

	<b>OG</b>
Bad	8,93 m <sup>2</sup>
Kind	16,24 m <sup>2</sup>
Flur	5,89 m <sup>2</sup>
Schlafen	13,89 m <sup>2</sup>
Balkon 1/2	2,16 m <sup>2</sup>

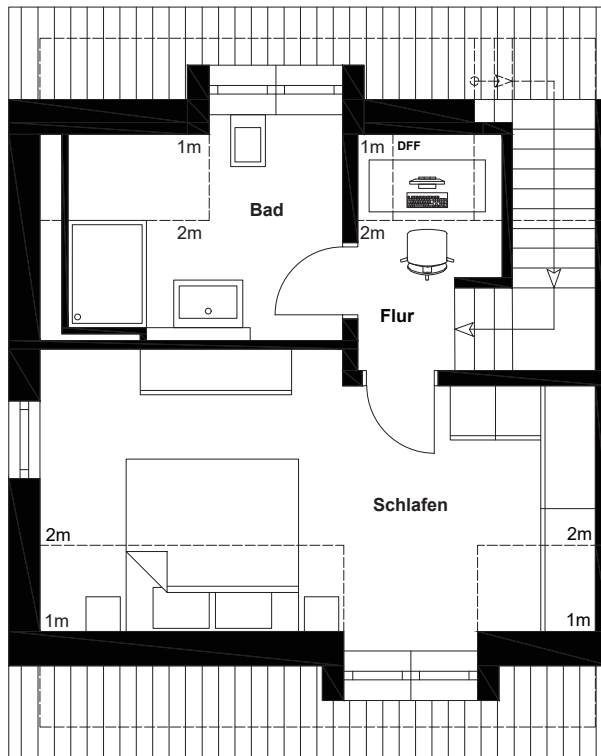
<b>Wohnfläche</b>	<b>ca. 153,15 m<sup>2</sup></b>
<b>Wohn-/Nutzfläche</b>	<b>ca. 198,01 m<sup>2</sup></b>
<b>Grundstück</b>	<b>ca. 303,70 m<sup>2</sup></b>



WOHNART



DACHGESCHOSS

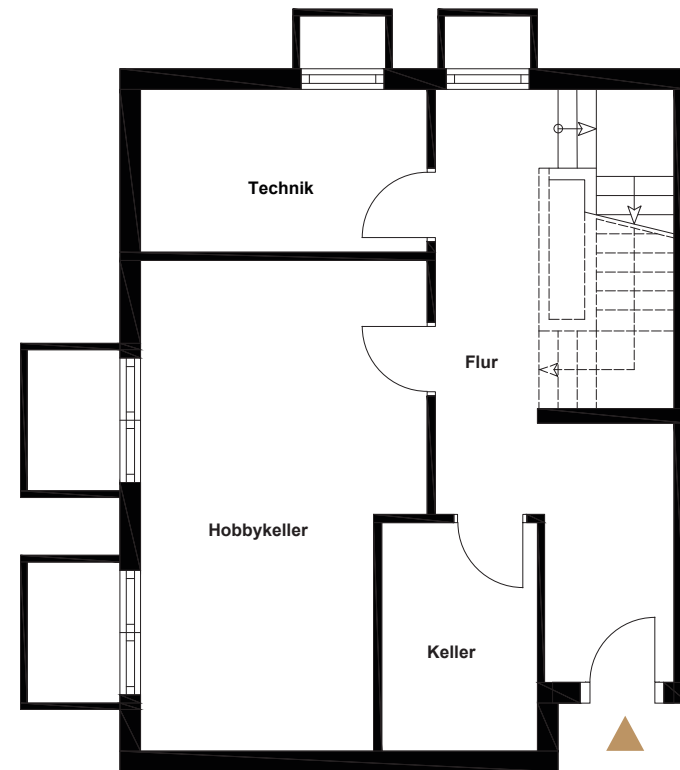


DG

Bad 8,49 m<sup>2</sup>  
 Flur 3,60 m<sup>2</sup>  
 Schlafen 17,41 m<sup>2</sup>

KG

Keller 5,17 m<sup>2</sup>  
 Flur 1/2 7,47 m<sup>2</sup>  
 Hobbykeller 1/2 9,31 m<sup>2</sup>  
 Technik 6,77 m<sup>2</sup>



UNTERGESCHOSS

ZUGANG TG